

## SCHEMA TECNICA SERIE "100" RACCORDI STANDARD

I raccordi di linea della nostra serie 100, sono realizzati in Italia, a garanzia di elevati standard di qualità, secondo le normative ISO di riferimento, e rispondono alle seguenti specifiche tecniche e applicative

### FLUIDO

Aria compressa, acqua fino a 100 °C (per altri fluidi contattare il nostro UT)

### APPLICAZIONI

Circuiti pneumatici, oleodinamici e idraulici

### TEMPERATURE E PRESSIONI

Le temperature e le pressioni dipendono generalmente dalle caratteristiche del tubo impiegato. La pressione massima consigliata è 60 bar

### FILETTATURE

BSP cilindrica UNI-ISO 228

BSP conica UNI-ISO 7

Metrica ISO/R 262

### MATERIALI UTILIZZATI

Ottone UNI EN 12164 CW614N (nichelato)

Ottone UNI EN 12165 CW617N (nichelato)

NBR 70 DWGV-EN549 UL157 (guarnizioni tenuta)

Nylon/Alluminio (rondelle)

## STANDARD "100" SERIES TECHNICAL SHEET

*The standard 100 series fittings are produced in Italy according to the reference ISO norms as warranty of high quality level and answer to the followings technical specifications and applications:*

### FLUIDS

*Compressed air, water up to 100 °C (for different fluid pls contact our Technical*

### APPLICATIONS

*Pneumatic, oleodynamic and hydraulic circuits*

### TEMPERATURES AND PRESSURES

*Temperatures and pressures usually depend by the technical features of the employed tubes. Max pressure suggested 60 bar.*

### THREAD TYPE

*BSP parallel UNI-ISO 228*

*BSP tapered UNI-ISO 7*

*Metric ISO/R 262*

### MATERIALS



*Brass UNI EN 12164 CW614N (nickel Plated)*

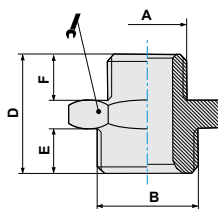
*Brass UNIEN 12165 CW617N (nickelPlated)*



*NBR 70 DWGV-EN549 UL157 (seals)*

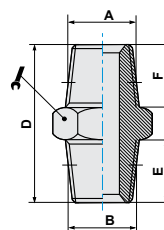
*Nylon/Aluminium (washers)*


**ART. 101** Nipplo cilindrico  
Parallel nipple

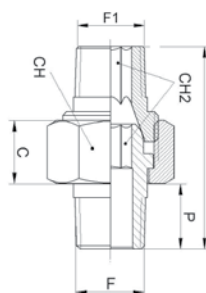
CODICE	A	B	D	E	F		
101M5M5	M5	M5	11,5	4	4	8	100
101M518	M5	G1/8	14,5	6	4	14	100
1011818	G1/8	G1/8	16,5	6	6	14	100
1011814	G1/8	G1/4	19,0	8	6	17	100
1011838	G1/8	G3/8	20,0	9	6	19	100
1011414	G1/4	G1/4	21,0	8	8	17	100
1011438	G1/4	G3/8	22,0	9	8	19	100
1011412	G1/4	G1/2	23,5	10	8	24	100
1013838	G3/8	G3/8	23,0	9	9	19	100
1013812	G3/8	G1/2	24,5	10	9	24	50
1011212	G1/2	G1/2	25,5	10	10	24	50
1013434	G3/4	G3/4	28,5	11	11	30	25
1011234	G1/2	G3/4	27,5	11	10	30	25


**ART. 102** Nipplo conico  
Taper nipple

CODICE	A	B	D	E	F		
1021818	G1/8	G1/8	20,0	8,0	8,0	12	100
1021814	G1/8	G1/4	24,0	11,0	8,0	14	100
1021838	G1/8	G3/8	24,5	11,5	8,0	17	100
1021812	G1/8	G1/2	27,5	14,0	8,0	22	50
1021414	G1/4	G1/4	27,0	11,0	11,0	14	100
1021438	G1/4	G3/8	27,5	11,5	11,0	17	100
1021412	G1/4	G1/2	30,5	14,0	11,0	22	50
1023838	G3/8	G3/8	28,0	11,5	11,5	17	100
1023812	G3/8	G1/2	31,0	14,0	11,5	22	50
1021212	G1/2	G1/2	33,5	14,0	14,0	22	50
1021234	G1/2	G3/4	37,5	16,5	14,0	27	25
1023434	G3/4	G3/4	40,0	16,5	16,5	27	25
1023401	G3/4	G1'	42,5	19,0	16,5	34	10
1020101	G1'	G1'	45,0	19,0	19,0	34	10

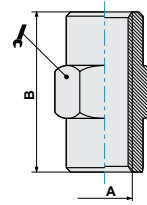

**ART. 102P3** Nipplo conico 3 pezzi  
Nipple (taper) - 3 pieces

CODICE	F	F1	CH	CH2	P	L	C	Gr	
10218P3	1/8	1/8	15	5	9,0	27,0	8,6	18,5	100
10214P3	1/4	1/4	19	6	11,5	33,5	9,6	36,0	100
10238P3	3/8	3/8	22	8	13,0	36,0	10,0	66,0	100
10212P3	1/2	1/2	27	12	15,5	45,0	12,0	88,0	100
10234P3	3/4	3/4	36	14	18,0	53,0	17,0	200,0	100
10201P3	1"	1"	46	19	22,0	64,0	20,0	360,0	100
1021814P3	1/8	1/4	15	5	9,0	30,0	8,5	24,0	100
1021438P3	1/4	3/8	19	6	11,5	36,0	9,5	45,5	100
1023812P3	3/8	1/2	22	8	13,0	39,0	10,0	76,0	100

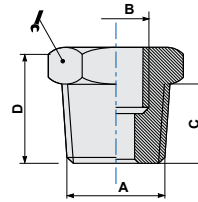


**ART. 103** Manicotto filettato  
*Sleeve*

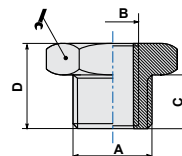
CODICE	A	B					
103M5	M5	11				8	100
10318	G1/8	15				14	100
10314	G1/4	22				17	100
10338	G3/8	23				22	50
10312	G1/2	30				26	25
10334	G3/4	32				32	20


**ART. 104** Riduzione M/F conica  
*Taper reducer*

CODICE	A	B	C	D			
1041418	G1/4	G1/8	11,0	16,0		14	100
1043818	G3/8	G1/8	11,5	16,5		17	100
1041218	G1/2	G1/8	14,0	19,5		22	50
1043814	G3/8	G1/4	11,5	16,5		17	100
1041214	G1/2	G1/4	14,0	19,5		22	50
1041238	G1/2	G3/8	14,0	19,5		22	50
1043412	G3/4	G1/2	16,5	23,5		27	25
1043438	G3/4	G3/8	16,5	23,5		27	10
1040112	G1'	G1/2	17,0	25,0		34	10
1040134	G1'	G3/4	17,0	25,0		34	10

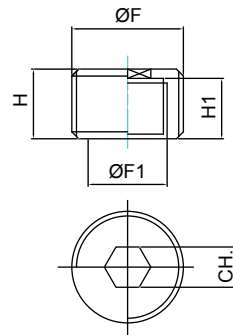

**ART. 104Z** Riduzione M/F cilindrica  
*Parallel reducer*

CODICE	A	B	C	D			
104Z18M5	G1/8	M5	6,0	10,5		14	100
104Z1418	G1/4	G1/8	8,0	13,0		17	100
104Z3818	G3/8	G1/8	9,0	14,0		19	100
104Z3814	G3/8	G1/4	9,0	14,0		19	100
104Z1218	G1/2	G1/8	10,0	15,5		24	50
104Z1214	G1/2	G1/4	10,0	15,5		24	50
104Z1238	G1/2	G3/8	10,0	15,5		24	50
104Z3412	G3/4	G1/2	12,5	18,0		30	10
104Z3438	G3/4	G3/8	12,5	18,0		30	10

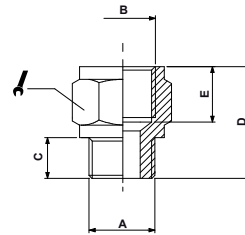


**ART. 104S** Riduzione cilindrica a scomparsa  
*Disappearance parallel reducer*

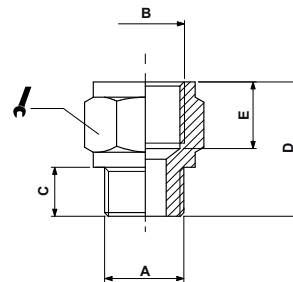
CODICE	F	F1	H		
104S1418	1/4	1/8	8		100
104S3814	3/8	1/4	9		100
104S1238	1/2	3/8	10		100
104S3412	3/4	1/2	14		100
104S0134	1"	3/4	20		100


**ART. 105** Prolunga M/F conica  
*Taper M/F extension*

CODICE	A	B	C	D	E		
1051818	G1/8	G1/8	8,0	18,0	8,0	14	100
1051814	G1/8	G1/4	8,0	21,5	11,0	17	100
1051838	G1/8	G3/8	8,0	22,5	11,5	22	50
1051414	G1/4	G1/4	11,0	24,5	11,0	17	100
1051438	G1/4	G3/8	11,0	24,5	11,5	22	50
1051412	G1/4	G1/2	11,0	29,0	14,0	24	50
1053838	G3/8	G3/8	11,5	26,0	11,5	22	50
1053812	G3/8	G1/2	11,5	29,5	14,0	24	25
1051212	G1/2	G1/2	14,0	32,0	14,0	26	25
1051234	G1/2	G3/4	14,0	35,0	16,5	32	10
1051201	G1/2	G1	14,0	37,0	18,0	38	10

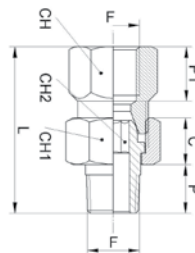

**ART. 105Z** Prolunga M/F cilindrica  
*Parallel M/F extension*

CODICE	A	B	C	D	E		
105ZM5M5	M5	M5	5	14,0	7,0	9	100
105ZM518	M5	G1/8	4	14,5	8,0	14	100
105ZM618	M6	G1/8	6	16,0	8,0	14	100
105Z1818	G1/8	G1/8	6	16,0	8,0	14	100
105Z1814	G1/8	G1/4	6	19,5	11,0	17	100
105Z1838	G1/8	G3/8	6	20,5	11,5	22	50
105Z1414	G1/4	G1/4	8	21,5	11,0	17	100
105Z1438	G1/4	G3/8	8	22,5	11,5	22	50
105Z1412	G1/4	G1/2	8	26,0	14,0	24	50
105Z3838	G3/8	G3/8	9	23,5	11,5	22	50
105Z3812	G3/8	G1/2	9	27,0	14,0	24	25
105Z1212	G1/2	G1/2	10	28,0	14,0	26	25
105Z1234	G1/2	G3/4	10	30,0	16,5	32	10

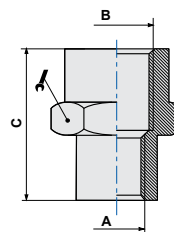


**ART. 105P3** Prolunga M/F - 3 pezzi  
*Extension M/F - 3 pieces*

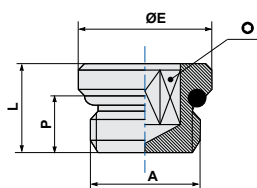
CODICE	F	CH	CH1	CH2	P	P1	L	C	Gr	
10518P3	1/8	14	15	5	9,0	10,0	30,5	8,5	19,0	100
10514P3	1/4	17	19	6	12,0	12,0	37,0	9,5	39,0	100
10538P3	3/8	21	22	8	12,0	12,0	40,0	10,0	68,0	100
10512P3	1/2	25	27	12	15,0	15,0	48,0	12,0	118,0	100


**ART. 106** Manicotto riduzione  
*Reducing sleeve*

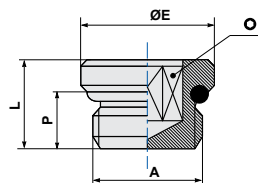
CODICE	A	B	C			
106M518	M5	G1/8	13,5		14	100
1061814	G1/8	G1/4	19,0		17	100
1061838	G1/8	G3/8	20,0		22	25
1061812	G1/8	G1/2	24,0		26	50
1061438	G1/4	G3/8	23,0		22	50
1061412	G1/4	G1/2	25,0		26	50
1063812	G3/8	G1/2	27,5		26	25
1061234	G1/2	G3/4	30,0		32	20


**ART. 107** Tappo maschio cilindrico con O-Ring  
*Parallel male plug + O-Ring*



CODICE	A	P	L	ØE		
107M5	M5	4,0	5,5	8	2,5	100
10718	G1/8	6,0	8,0	14	4,0	100
10714	G1/4	8,0	10,0	17	6,0	100
10738	G3/8	9,0	12,0	20	8,0	100
10712	G1/2	11,0	14,0	24	10,0	50
10734	G3/4	15,5	20,0	32	12,0	25

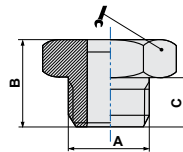

**ART. 107P** Tappo maschio cilindrico con OR (Tecnopolimero)  
*Parallel male plug + OR (Technopolymer)*



CODICE	A	P	L	ØE		
107P18	G1/8	5,3	8,2	14	4	100
107P14	G1/4	6,5	9,2	18	6	100

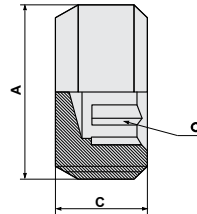




**ART. 107Z** Tappo maschio cilindrico  
Parallel male plug

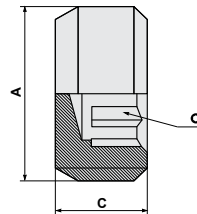
CODICE	A	B	C				
107Z18	G1/8	10,5	6			14	100
107Z14	G1/4	13,0	8			17	100
107Z38	G3/8	14,0	9			19	50
107Z12	G1/2	15,5	10			24	50
107Z34	G3/4	16,5	11			30	25
107Z01	G1"	19,0	13			38	10




**ART. E100** Tappo a scomparsa conico  
Disappearance tapered plug

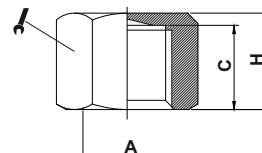
CODICE	A	C			
E10018	G1/8	8		5	100
E10018L5	G1/8	5		5	100
E10014	G1/4	10		6	100
E10038	G3/8	11		8	50
E10012	G1/2	13		10	50


**ART. E200** Tappo a scomparsa cilindrico  
Disappearance parallel plug

CODICE	A	C			
E20018	G1/8	8		5	100
E20014	G1/4	10		6	100
E20038	G3/8	11		8	50
E20012	G1/2	13		10	50

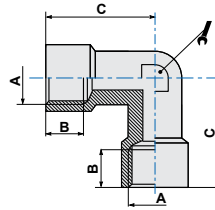

**ART. 108** Tappo femmina  
Female plug

CODICE	A	C	H			
10818	G1/8	8,0	10,0		14	100
10814	G1/4	11,0	13,5		17	100
10838	G3/8	11,5	14,0		20	50
10812	G1/2	14,0	16,5		24	50

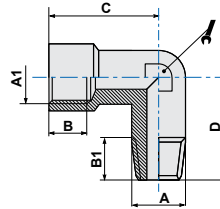


**ART. 109** Elle F.F.  
Female elbow

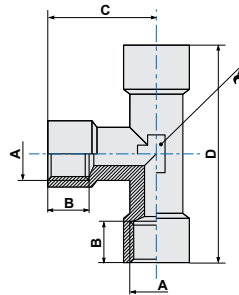
CODICE	A	B	C				
10918	G1/8	7	20,0			10	100
10914	G1/4	8	25,5			13	50
10938	G3/8	10	29,0			17	25
10912	G1/2	11	35,0			20	20
10934	G3/4	16	36,0			25	5
10901	G1/2	19	44,0			30	5


**ART. 110** Elle M.F.  
Male-Female elbow

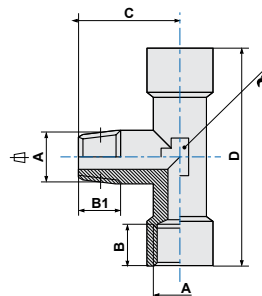
CODICE	A	A1	B	B1	C	D		
110M5	M5	M5	4		11,0	11,5	9	100
11018	G1/8	G1/8	7	8	20,0	19,0	10	50
11014	G1/4	G1/4	8	11	25,5	24,0	13	50
11038	G3/8	G3/8	10	11,5	29,0	26,5	17	25
11012	G1/2	G1/2	11	14	35,0	31,5	20	20
11034	G3/4	G3/4	16	16	35,0	34,5	25	5
11001	G1'	G1'	19	16	44,0	51,0	30	5
11014F18M	G1/8	G1/4	8	8	25,5	23,0	13	50


**ART. 111** T F.F.F.  
Female tee



CODICE	A	B	C	D		
11118	G1/8	7	20,0	40	10	50
11114	G1/4	8	25,5	51	13	25
11138	G3/8	10	29,0	58	17	20
11112	G1/2	11	35,0	70	20	10
11134	G3/4	16	31,0	73	25	5
11101	G1'	19	49,5	90	30	5

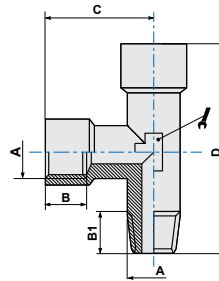

**ART. 112** T F.M.F.  
Centre male tee



CODICE	A	B	B1	C	D		
11218	G1/8	7	8,0	19,0	40	10	50
11214	G1/4	8	11,0	24,0	51	13	25
11238	G3/8	10	13,6	26,5	58	17	25
11212	G1/2	11	15,5	31,5	72	20	10
11234	G3/4	16	15,0	31,0	73	25	5
11201	G1'	19	16,0	38,0	90	30	5

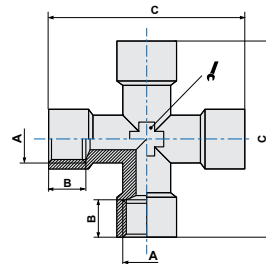




**ART. 113** T M.F.F.  
Off-set male tee

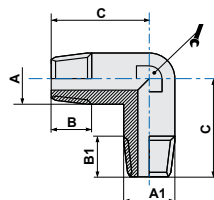
CODICE	A	B	B1	C	D		
11318	G1/8	7	8,0	20,0	39,0	10	50
11314	G1/4	8	11,0	25,5	49,5	13	25
11338	G3/8	10	13,6	29,0	55,5	17	25
11312	G1/2	11	15,5	35,0	65,0	20	10
11334	G3/4	16	15,0	31,0	67,0	25	5
11301	G1"	19	16,0	44,0	84,0	30	5


**ART. 114** Croce F.F.F.F.  
Female cross

CODICE	A	B	C				
11418	G1/8	7	40			10	25
11414	G1/4	8	51			13	25
11438	G3/8	10	58			17	10
11412	G1/2	11	72			20	5


**ART. 115** Elle M.M.  
Male elbow

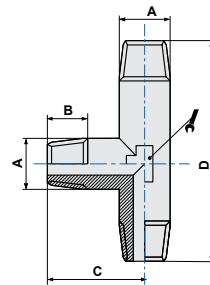
CODICE	A	B	C	A1	B1		
11518	G1/8	8,0	19,0	G1/8	8,0	10	100
11514	G1/4	12,5	24,0	G1/4	12,5	13	50
11538	G3/8	13,6	26,5	G3/8	26,5	17	25
11512	G1/2	15,5	31,5	G1/2	15,5	20	25
11534	G3/4	15,0	35,5	G3/4	15,0	25	5
11501	G1"	16,0	51,0	G1"	51,0	30	5
1151814	G1/8	8,0	22,0	G1/4	12,5	13	100



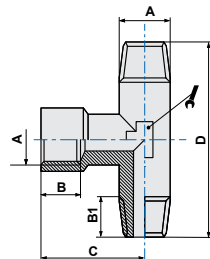


**ART. 116** T.M.M.M.  
Male tee

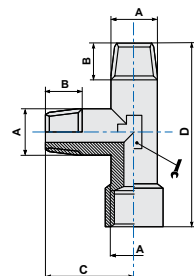
CODICE	A	B	C	D			
11618	G1/8	8,0	19,0	38		10	100
11614	G1/4	12,5	24,0	48		13	50
11638	G3/8	13,6	26,5	53		17	25
11612	G1/2	15,5	31,5	63		20	10
11634	G3/4	15,0	35,5	66		25	5
11601	G1"	16,0	40,5	78		30	5


**ART. 117** T.M.F.M.  
Centre female tee



CODICE	A	B	B1	C	D			
11718	G1/8	7	8,0	20,0	38		10	100
11714	G1/4	8	12,5	25,5	48		13	50
11738	G3/8	10	13,6	29,0	53		17	25
11712	G1/2	11	15,5	36,0	63		17	10
11734	G3/4	16	15,0	34,5	66		25	5
11701	G1"	19	16,0	46,5	78		30	5

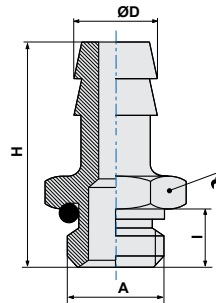

**ART. 118** T.M.M.F.  
Off-set female tee



CODICE	A	B	C	D			
11818	G1/8	8,0	19,0	39,0		10	100
11814	G1/4	12,5	24,0	49,5		13	50
11838	G3/8	13,6	26,5	55,5		17	25
11812	G1/2	15,5	31,5	67,5		20	10
11834	G3/4	15,0	34,5	69,0		25	5
11801	G1"	16,0	38,0	84,0		30	5

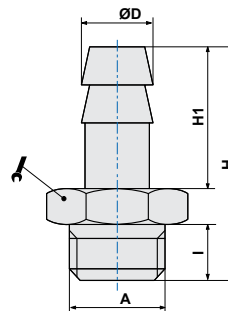


**ART. 119** Portagomma maschio con O-Ring  
*Male hose adapter + O-Ring*

CODICE	ØD	A	I	H			
1190718	7	G1/8	6	31,5		13	100
1190714	7	G1/4	8	34,0		16	100
1190818	8	G1/8	6	31,5		13	100
1190918	9	G1/8	6	31,5		13	100
1190914	9	G1/4	8	34,0		16	100
1190938	9	G3/8	9	35,0		17	50
1191018	10	G1/8	6	31,5		13	50
1191014	10	G1/4	8	34,0		16	50
1191038	10	G3/8	9	35,0		17	50
1191214	12	G1/4	8	34,0		16	50
1191238	12	G3/8	9	36,0		17	50
1191212	12	G1/2	11	37,0		22	50
1191738	17	G3/8	9	36,0		17	50
1191712	17	G1/2	11	37,0		22	50




**ART. 119Z** Portagomma maschio cilindrico  
*Male hose adapter*

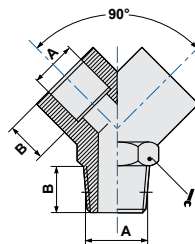
CODICE	ØD	A	I	H	H1		
119Z0618	6	G1/8	6	29,5	19,0	12	100
119Z0614	6	G1/4	8	32,0	19,0	14	100
119Z0718	7	G1/8	6	29,5	19,0	12	100
119Z0714	7	G1/4	8	32,0	19,0	14	100
119Z0818	8	G1/8	6	29,5	19,0	12	100
119Z0814	8	G1/4	8	32,0	19,0	14	100
119Z0838	8	G3/8	9	33,0	19,0	19	100
119Z0918	9	G1/8	6	29,5	19,0	12	100
119Z0914	9	G1/4	8	32,0	19,0	14	100
119Z0938	9	G3/8	9	33,0	19,0	19	100
119Z0912	9	G1/2	10	35,5	19,0	24	25
119Z1018	10	G1/8	6	30,5	20,0	20	100
119Z1014	10	G1/4	8	33,0	20,0	20	50
119Z1038	10	G3/8	9	34,0	20,0	19	100
119Z1012	10	G1/2	10	36,0	20,0	24	50
119Z1214	12	G1/4	8	33,0	20,0	14	50
119Z1238	12	G3/8	9	34,0	20,0	19	50
119Z1212	12	G1/2	10	35,5	20,0	22	50
119Z1438	14	G3/8	9	36,0	22,0	19	50
119Z1412	14	G1/2	10	37,5	22,0	22	50
119Z1638	16	G3/8	9	38,0	24,0	19	50
119Z1612	16	G1/2	10	38,0	22,0	24	25
119Z1738	17	G3/8	9	38,0	24,0	24	50
119Z1712	17	G1/2	10	39,5	24,0	24	50
119Z2012	20	G1/2	10	39,5	24,0	24	25





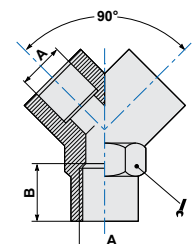





**ART. 125** Y maschio  
Male Y

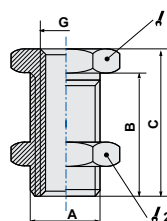
CODICE	A	B				
12518	G1/8	8,0			13	50
12514	G1/4	11,0			17	25
12538	G3/8	11,5			20	25
12512	G1/2	14,0			25	10



**ART. 126** Y femmina  
Female Y

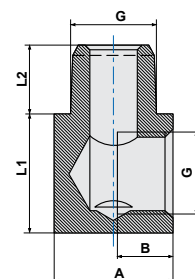
CODICE	A	B				
12618	G1/8	8			13	50
12614	G1/4	11			17	25
12638	G3/8	11			20	25
12612	G1/2	14			25	10



**ART. 127** Passaparete femmina (nichelato)  
Female bulkhead (nickel plated)

CODICE	G	A	B	C			
127M5	M5	M10x1,0	10,5	14	14	14	100
12718	G1/8	M16x1,5	14,0	18	22	19	50
12714	G1/4	M20x1,5	21,0	24	27	24	25
12738	G3/8	M26x1,5	21,0	26	32	30	25
12712	G1/2	M28x1,5	27,0	33	36	32	10


**ART. RLB100** Raccordo ad "L" M/F conico  
Male-female elbow tapered

CODICE	G	A	B	L1	L2	
RLB100M5	M5	9	4,5	9	4,5	100
RLB10018	1/8	14	6,5	14	8	100
RLB10014	1/4	17	9	17	9,5	100


**ART. 412** Anello singolo femmina  
Female single banjo body

CODICE	A	ØB	ØC	D	H	
41218	G1/8	9,9	14	20	15	50
41214	G1/4	13,3	18	24	17	50
41238	G3/8	16,8	21	28,5	20	25
41212	G1/2	21	26	34,5	24	25

